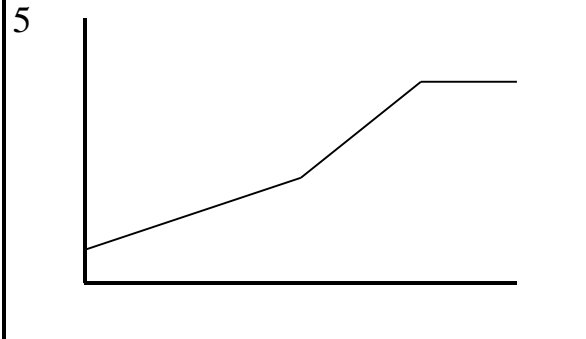
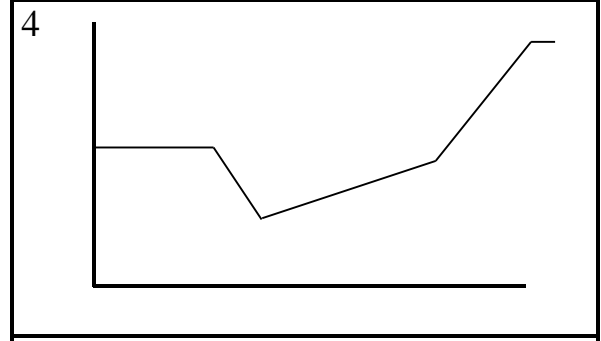
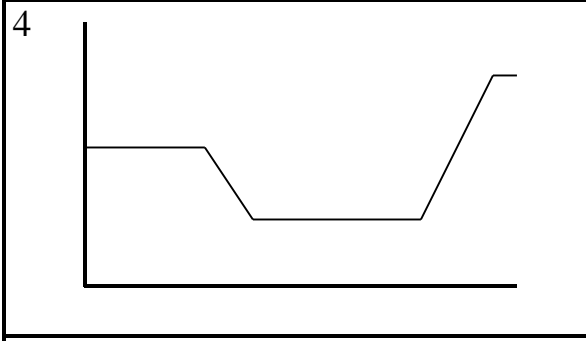
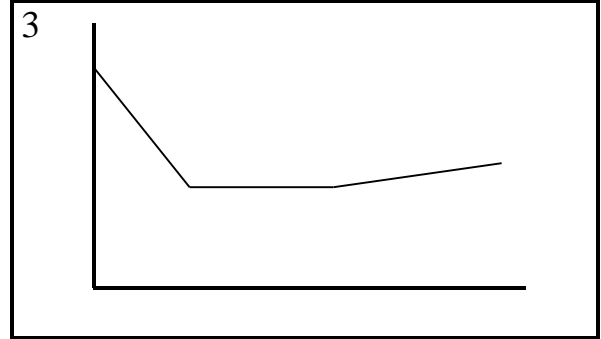
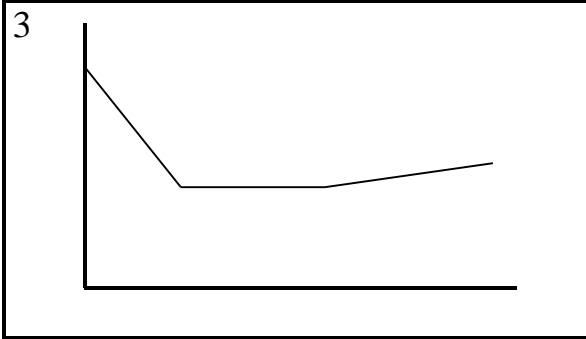
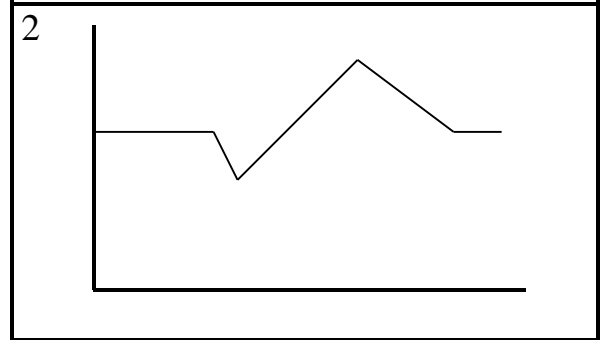
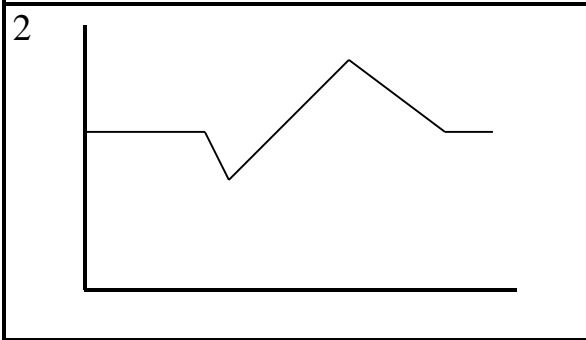
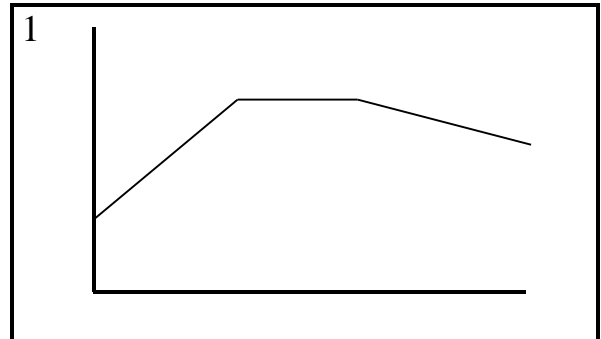
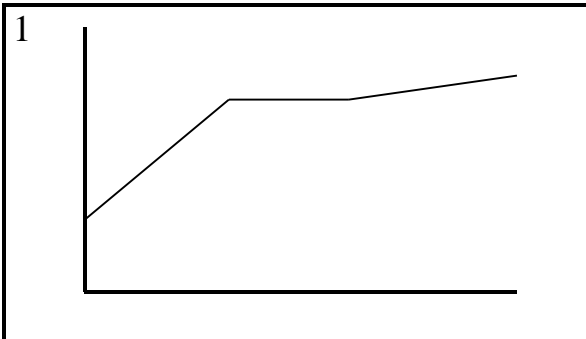
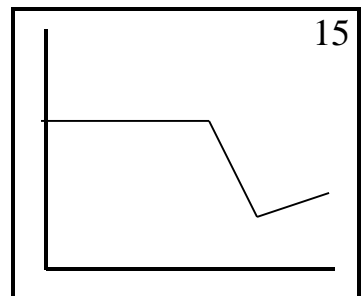
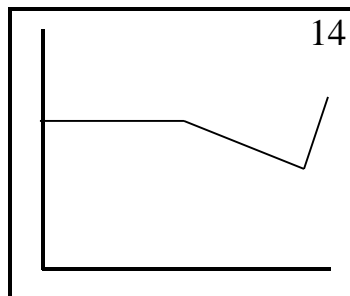
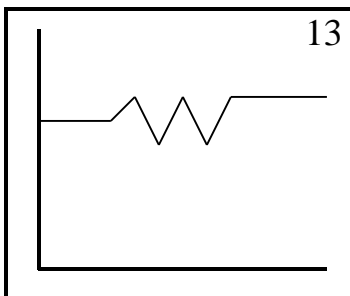
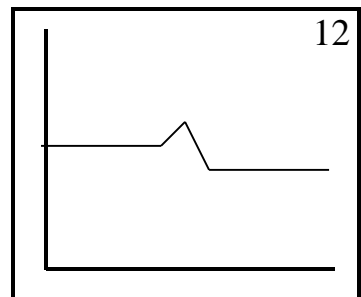
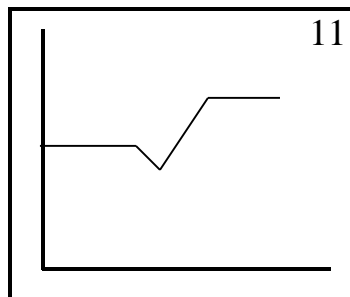
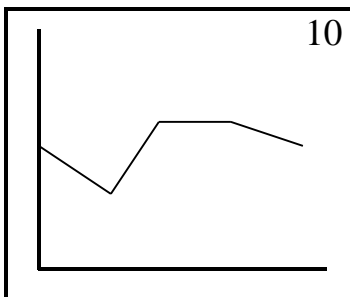
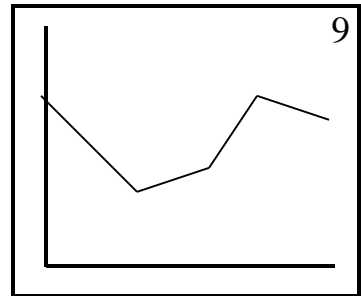
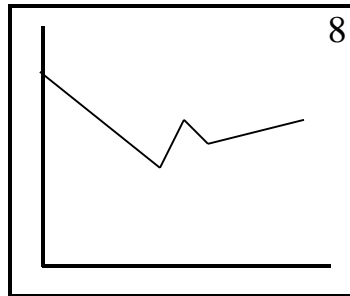
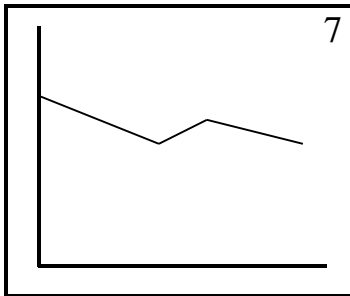
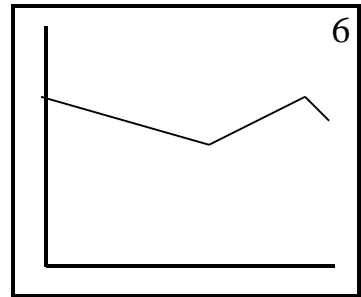
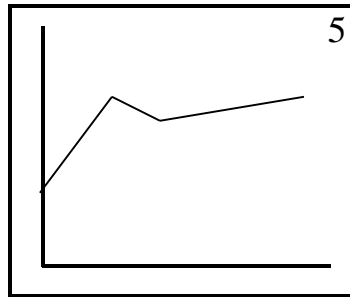
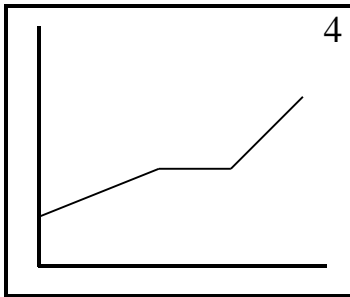
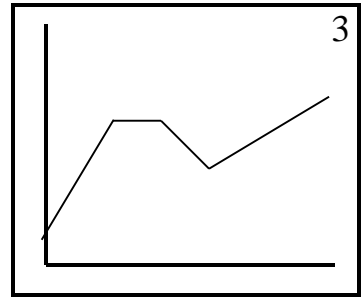
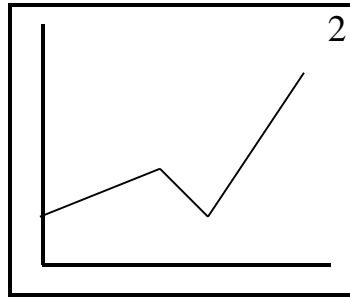
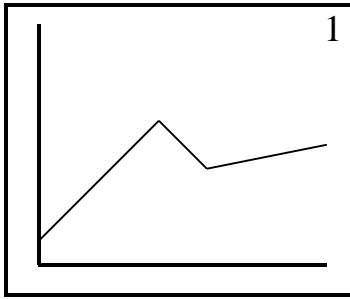


SAME OR DIFFERENT A

SAME OR DIFFERENT B

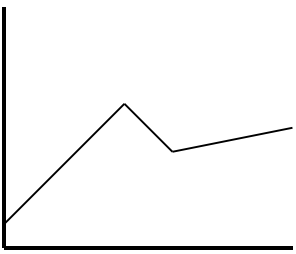
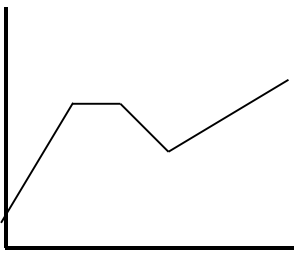
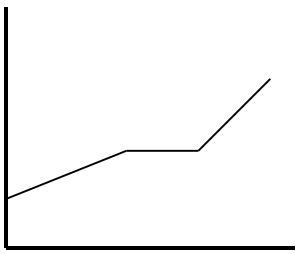
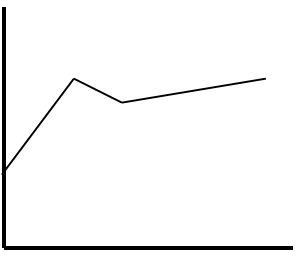
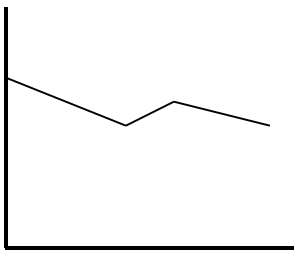
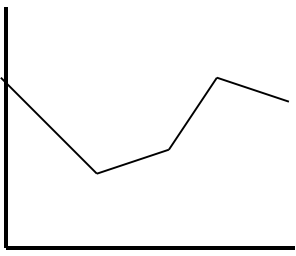
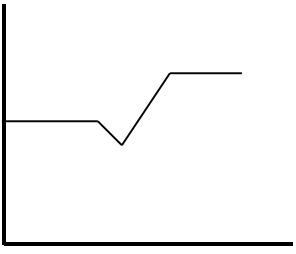
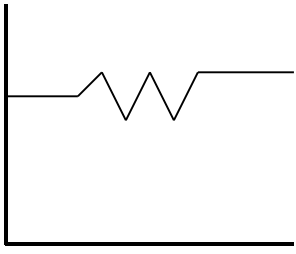
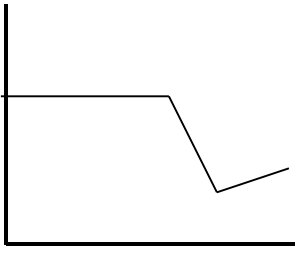


WHICH GRAPH AM I DESCRIBING?



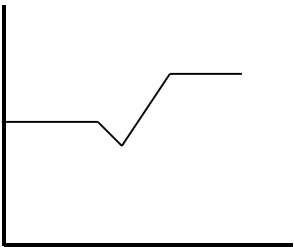
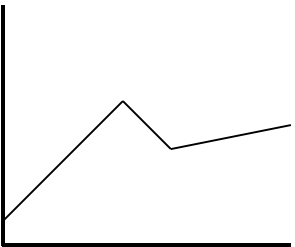
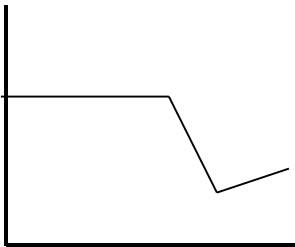
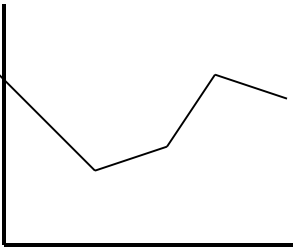
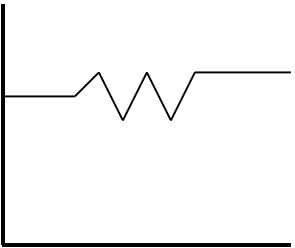
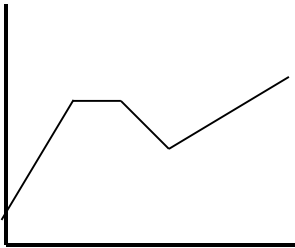
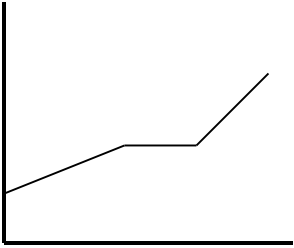
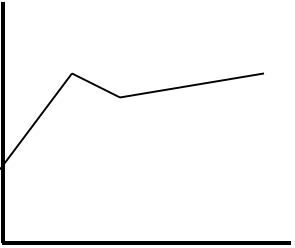
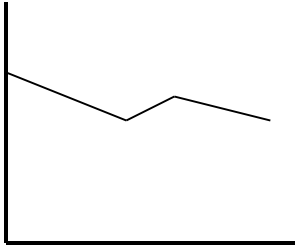
MATCHING NUMBERS AND LETTERS LEARNER A

You and your partner both have the same graphs. The graphs below are labelled with letters whereas on your partners they are labelled with numbers. Together, by describing your graphs to each other, your task is to find which letter matches which number i.e. which two graphs are the same.

		
A	B	C
		
D	E	F
		
G	H	I

MATCHING NUMBERS AND LETTERS LEARNER B

You and your partner both have the same graphs. The graphs below are labelled with numbers whereas on your partners they are labelled with letters. Together, by describing your graphs to each other, your task is to find which letter matches which number i.e. which two graphs are the same.

		
1	2	3
		
4	5	6
		
7	8	9

QUICK PREDICTION CARDS

UNEMPLOYMENT RATE	STANDARD OF LIVING	LIFE EXPECTANCY
NUMBER OF MARIAGES	NUMBER OF DIVORCES	CHILDREN PER COUPLE
INTRA CITY TRAVEL	POLITICAL SYSTEM	CRIME
PROSTITUTION	DRUGS	DEATH CAUSED BY CANCER
NUMBER OF SMOKERS	AGE OF RETIREMENT	NUMBER OF RETIRED PEOPLE
FOOD	ALCOHOL	COMMUNICATION
WORKING HOURS	HOLIDAYS	MONEY

FORECASTING FIGURES

With a partner, try to predict the figures for the future.
(Information from Newsweek Dec.27/ Jan. 3, 2000)

LIFE EXPECTANCY

LIFE SPAN	
1900	36.2
1995	65.4
2025	

WORLD POPULATION

	POPULATION IN BILLIONS
1900	1.6
1995	5.8
2025	

HEALTH

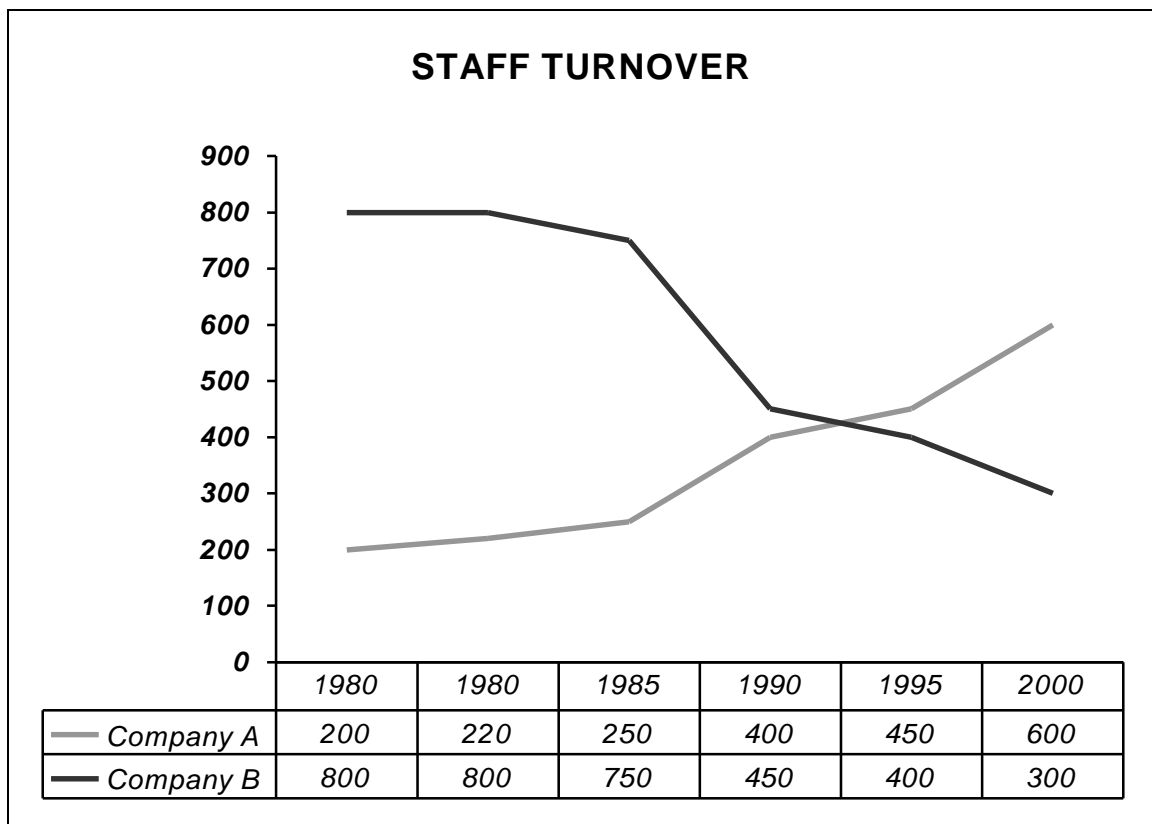
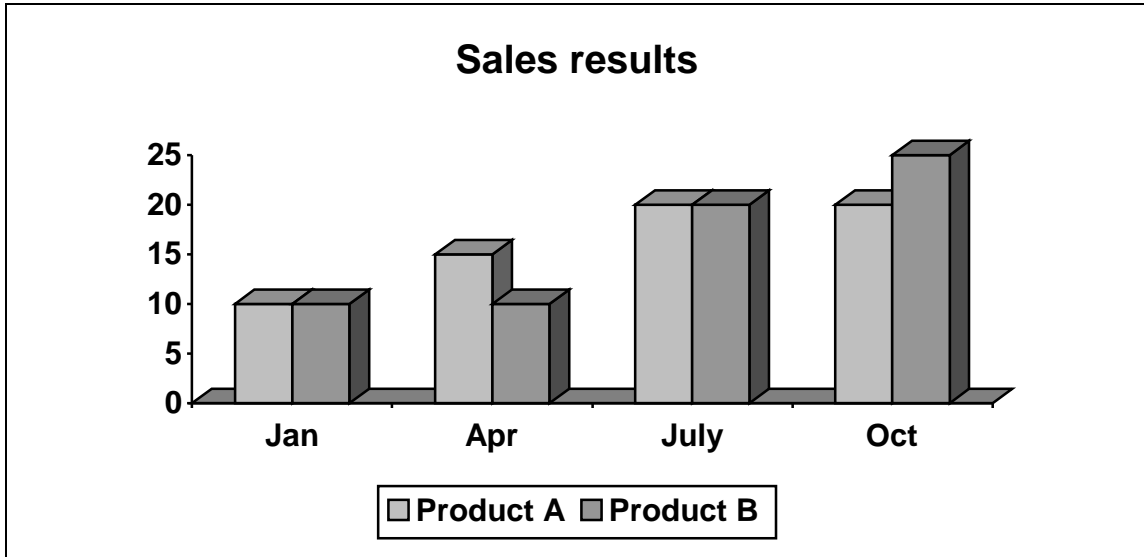
	1995	2025
People per doctor	3780	
Health care costs	2500 billion \$	
Hospital beds	18.2 m	

THE POOR

	1995	2025
Living in poverty	2400 m	
Undernourished	1800 m	
No proper shelter	1100 m	

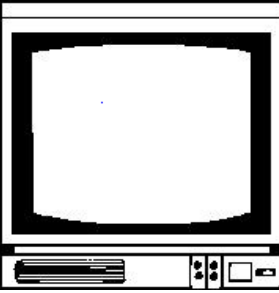
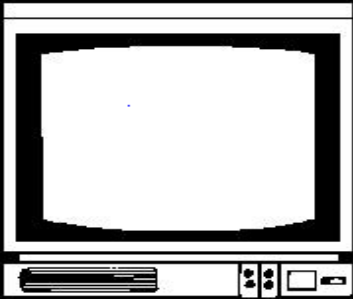
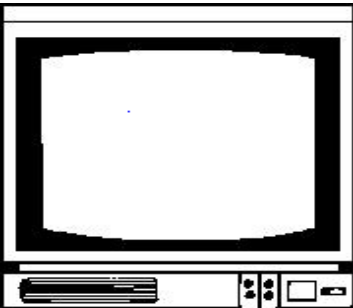
COMPARING GRAPHS

With a partner, compare and contrast the graphs below.



COMPARING PRODUCTS : televisions

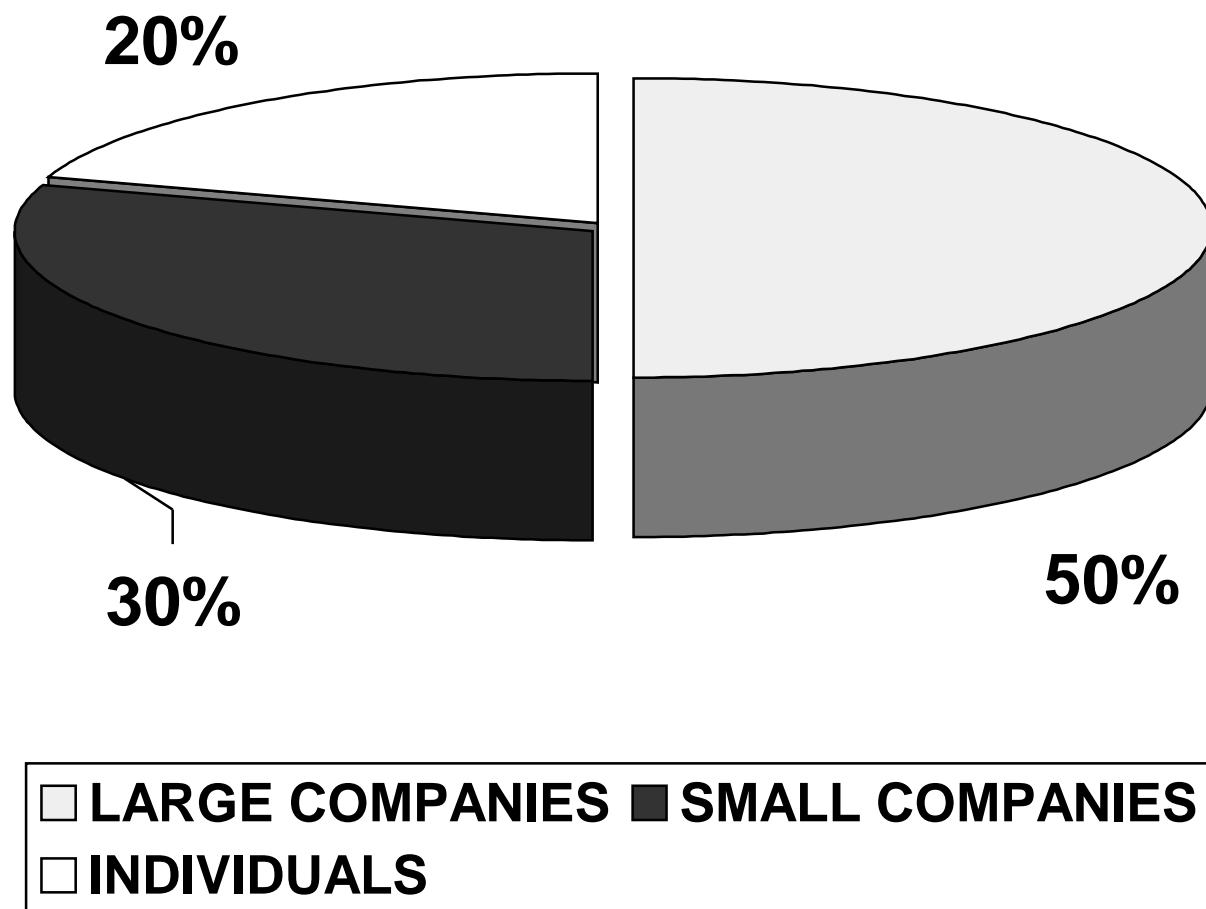
Which of the following televisions would you buy if you were buying one for yourself?

	FEATURES
	<ol style="list-style-type: none">1. 55cm screen.2. Remote control.3. On-screen display. <p>PRICE: £150</p>
	<ol style="list-style-type: none">1. 70 cm screen.2. Teletext.3. On-screen display.4. Remote control.5. Headphone socket. <p>PRICE: £220</p>
	<ol style="list-style-type: none">1. 70 cm screen.2. Teletext.3. On-screen display.4. Remote control.5. NICAM stereo.6. Black matrix tube.7. 70 channel memory.8. Headphone socket.9. Wide screen viewing. <p>PRICE: £400</p>

- COMPANY
- CUSTOMERS
- COURSES
- TRAINING
FORMAT

- SET UP: 1990
- 6 SCHOOLS
- 100 TEACHERS
- 25 TRAINING CONSULTANTS
- 6 LANGUAGES TAUGHT

CUSTOMERS



COURSES

- **ADAPTED TO SUIT LEARNERS' NEEDS**
- **OBJECTIVE NEEDS ANALYSIS**
- **SUBJECTIVE NEEDS ANALYSIS**
- **GROUP CLASSES**
- **ONE TO ONE TEACHING**

TRAINING FORMATS

